

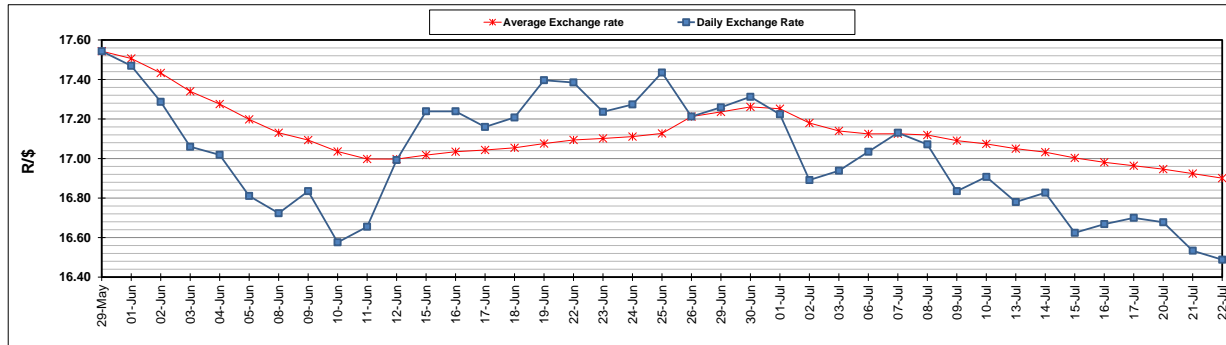
	PETROL 95 ULP	PETROL 93 ULP & LRP	DIESEL 0.05%	DIESEL 0.005%	ILL. PAR.
GAUTENG PUMP PRICE (SA c/l) AS FROM 01/07/2020	1,512.000	1,483.000	-	-	-
WHOLESALE PRICE (SA c/l) AS FROM 01/07/2020	-	-	1,303.560	1,307.960	703.828
SINGLE NATIONAL MAXIMUM RETAIL PRICE	-	-	-	-	882.000
BASIC FUEL PRICE - 22/07/2020 (SA c/l)	546.329	534.262	580.522	585.026	520.188
PRESS RELEASE CONTRIBUTION TO BFP 01/07/2020 - 22/07/2020 (SA c/l)	564.770	545.770	552.630	557.030	499.128
UNIT OVER/(UNDER) RECOVERY - 22/07/2020 (SA c/l)	18.441	11.508	(27.892)	(27.996)	(21.060)
AVERAGE BASIC FUEL PRICE 26/06/2020 - 22/07/2020	553.881	539.783	579.512	583.965	513.881
AVERAGE UNIT OVER/(UNDER) RECOVERY 26/06/2020 - 22/07/2020	(16.268)	(19.749)	(54.198)	(53.619)	(48.542)

ANALYSIS MOVEMENT OF AVERAGE OVER/(UNDER) RECOVERY

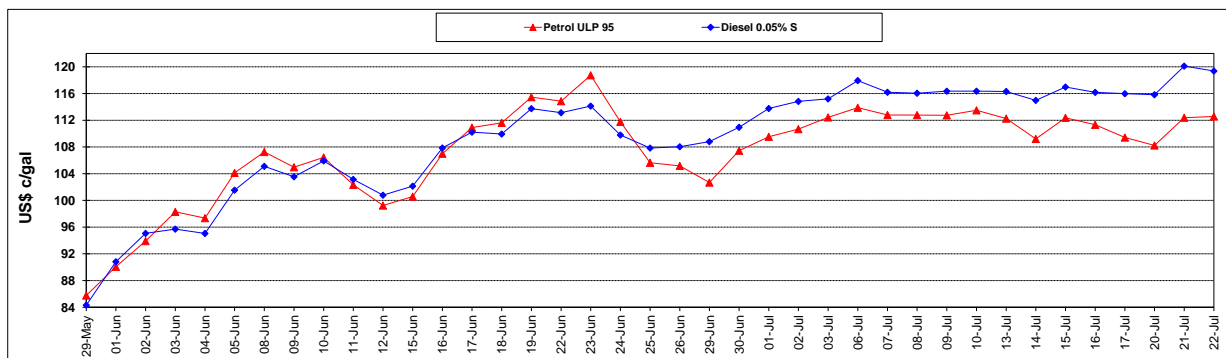
	PETROL 95	PETROL 93	DIESEL 0.05%	DIESEL 0.005%	ILL. PAR.
- MOVEMENT IN INTERNATIONAL PRODUCT PRICES	(23.685)	(26.978)	(61.958)	(61.438)	(55.423)
- MOVEMENT IN EXCHANGE RATE	7.416	7.228	7.760	7.819	6.881
AVERAGE UNIT OVER/(UNDER) RECOVERY 26/06/2020 - 22/07/2020	(16.268)	(19.749)	(54.198)	(53.619)	(48.542)

R/\$ EXCHANGE RATE - (R/\$16.4883 - 22/07/2020)

EXCHANGE RATE USED IN BASIC FUEL PRICE



INTERNATIONAL PRODUCT PRICES OF BASKET USED IN BASIC FUEL PRICE



BASIC FUEL PRICE IN SA CENTS PER LITRE

